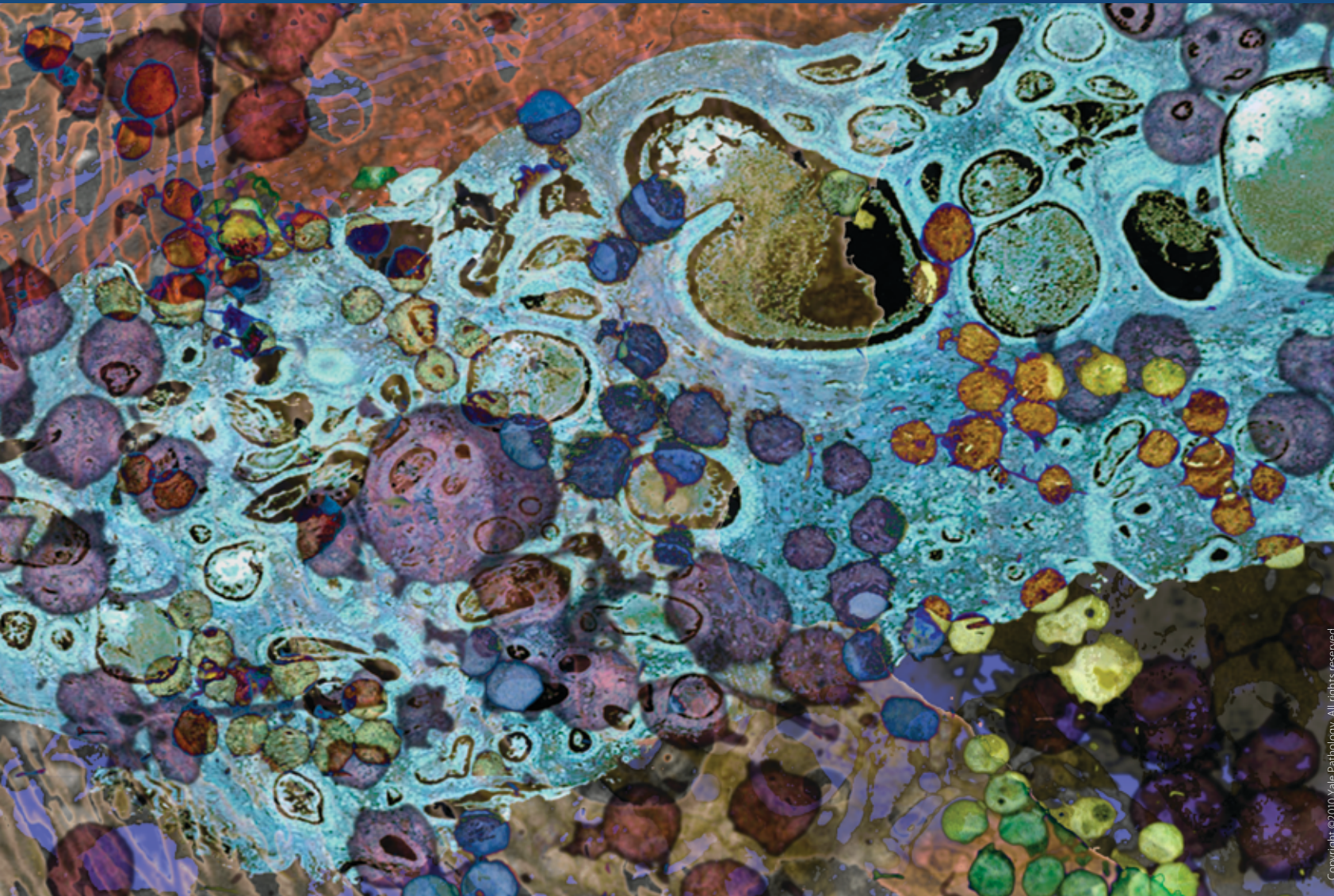


Breast Pathology



The specialists in Breast Pathology within the Yale Pathology Women's Health Program provide diagnoses on biopsies that have been performed in order to evaluate breast lesions that have been detected either clinically or by imaging studies. Therapeutic resections—such as lumpectomies, mastectomies, sentinel lymph nodes, and axillary lymph node dissections—are studied in detail to evaluate significant factors that are subsequently used to guide therapy.



Fattaneh A. Tavassoli, M.D.
Professor of Pathology and Obstetrics, Gynecology,
and Reproductive Sciences
Director, Pathology Women's Health Program

Veerle Bossuyt, M.D.
Assistant Professor of Pathology

Natalia Buza, M.D.
Assistant Professor of Pathology

José Costa, M.D.
Professor of Pathology and Medicine (Oncology)
Director, Translational Diagnostics
Director, Musculoskeletal Tumor Program

G. Kenneth Haines, III, M.D.
Associate Professor of Pathology
Co-Director, Medical Studies
Director, General Pathology Program

Sihem Khelifa, Ph.D.
Assistant Professor of Pathology

Ozlen Saglam, M.D.
Assistant Professor of Pathology

